



IMPACT REPORT 2021-2022

**SURROUNDING STUDENTS WITH A COMMUNITY
OF SUPPORT, EMPOWERING THEM TO STAY IN
SCHOOL AND ACHIEVE IN LIFE**



Our National Leadership

Elaine is a business leader, philanthropist, and a champion for children. Elaine has been a member of the national board since 1999, and she was elected chairman in 2007.

“When it comes to unlocking each and every child’s potential, we will never give up.”

Elaine Wynn, Chairman, Communities In Schools National Board of Directors



Bill Milliken, Founder and Vice Chairman of Communities In Schools, Inc., is one of the nation’s pioneers in the movement to give young people the help they need to graduate from high school and achieve in life.

“Programs don’t change children, relationships do.”

Bill Milliken, Founder and Vice-Chairman, Communities In Schools National Board of Directors



Rey Saldana, CIS alumni, is the current President and CEO of Communities In Schools. His journey from former student to national leader is inspiring to young people nationwide about the power they have to pursue their dreams.

Rey Saldana, President and CEO, Communities In Schools



MEET OUR LOCAL BOARD OF DIRECTORS

Gail Smith, Board Chair

Kristin Morris, Vice-Chair

Kelli Swenson, Treasurer

Jaymie Cullar, Secretary

Candice Fulton

Kathleen Brown – not in photo

Dr. Qian Li – not in photo

James Little

Dr. Sanchari Choudhury



Thank you to our 2021-22 CISGWFA Board of Directors for their dedication and support!

CISGWFA ADMINISTRATION

Toni Alonzo has been with the organization for 15 years, serving as Executive Director for the past seven years. Toni inspires her team with her passion for the CIS' Mission "to surround students with a community of support, empower them to stay in school, and achieve in life." Toni's personal mission aligns with CIS' as she supports in the empowerment of individuals through education for the intent of attaining a more industrious and a successful society. In August 2022, Toni and CISGWFA celebrated 15 years of providing integrated support services in the Texoma area. CISGWFA has proudly grown their services from one district to five districts serving over 1100 students and families. Toni acknowledges the success of Communities In Schools would not be possible without the generous support of the community. Toni extends a huge gratitude to all our partners!



Toni Alonzo
Executive Director of CISGWFA

"Communities In Schools fuels personal potential, so every student can take charge of their story and define their success for life."

Leticia Nieto oversees the day-to-day programming. She is the Program Coordinator, and she is responsible for the operations and management of the CISGWFA programs. Leticia has been with CIS for 12 years, beginning her time as Site Coordinator. She also serves as a liaison for CISGWFA and the State Offices of CIS and works closely with district staff, school staff, community agencies, parents/families, and students to assure coordination of the Community's services for the benefit of the students and their families. Along with making sure that the Site Coordinators are prepared for their campuses and maintaining their work, the Program Coordinator also makes sure, that each program is abiding by CIS standards and the unique CIS Model. This also mean making sure that each campus is including the 6 components of the CIS Model.



Leticia Nieto
Program Coordinator/Master Trainer

"As the Program Coordinator, my advocacy to continue serving and supporting students and their families goes beyond one school. I am committed that our Site Coordinators are mindful of implementing the program to achieve the CIS mission."

Connie Herrera has been with Communities In Schools for 2 years. Prior to joining CIS, Connie worked in the education field for 17 years. Connie's goal is to continue impacting youth in a positive way. As a data coordinator, Connie collaborates with administrative team to report annual outcomes reflecting the work of CISGWFA affiliate. Connie's responsibility as alumni coordinator is to establish an on-going alumni network. The goal of an alumni network is to continue supporting alumni beyond high school in whatever capacity needed.



Connie Herrera
Data/Alumni Coordinator

As alumni coordinator, "my goal is to encourage alumni to recognize the value of building professional relationships within the network and support one another."

Atzhiri Acosta was raised and educated in Wichita Falls, TX. She graduated from Midwestern State University in 2014 where she earned a degree in BSW. Atzhiri is starting her 5th year with Communities In Schools where she has served as a Site Coordinator at the elementary and middle school levels. She is now serving as Program's Caseworker where she provides mental and behavioral health support and guidance to students. Atzhiri is dedicated to serving the community that helped raise her and is passionate about empowering the youth within her community.



Atzhiri Acosta
Program Caseworker

"As Programs Caseworker my goal is to help children develop self-confidence, high self-esteem, and healthy emotional outlook on life. I look forward to encouraging children on their journey to positive mental health, where children can think clearly, develop socially, and learn new skills."

THE ISSUE

Envision the following scenario, you want to go to school but have no shoes to wear. You want to learn but you're too hungry to think. You want to graduate but you must drop out because you need to get a job to help support your family. This is the reality for millions of kids in the U.S.

By the time you finish reading this sentence, another student will have dropped out of school, abandoning his or her chances of living up to their full potential. In a year, over one million more students will have joined them continuing the cycle. And with 1 out of 5 students living in poverty, making economic hardship the rule rather than the exception, teachers face an even greater challenge trying to help students overcome the nonacademic barriers to learning.

It may sound like an overpowering issue, but the solution is simple. Young people thrive when adults care about them on a one-to-one level. That's exactly what Communities In Schools (CIS) provides. CIS is the nation's largest and most effective organization dedicated to keeping kids in school and helping them succeed in life — doing whatever it takes. Whether a student needs a ride to school, mental health services or a much-needed meal, CIS connects them to the help they need to reach their full potential. By harnessing the available resources in the community, and then matching these services to each student's needs, CIS is breaking the cycle of poverty and empowering students to create better lives, better communities, and a better world.

1 out of 5 students in the U.S. lives in poverty.

88% of teachers believe that student poverty is the #1 barrier to effective learning in the classroom.

20% of classroom time-teachers have spent helping students with problems outside of the classroom*

94% of teachers are in favor of providing dedicated staff from the local community to work closely with students and families with greatest needs*

92% of teachers are in favor of organizations/individuals working inside the school to help kids with nonacademic needs*

THE BARRIERS

REASONS STUDENTS DON'T GO TO SCHOOL



They're hungry When a child is hungry, he or she cannot focus on school, extracurricular activities, or the future.



They feel like they don't fit in Kids struggling with personal identity or physical appearance suffer from low self-esteem and may become a target for bullying.



They can't get there If students must walk through a dangerous neighborhood or lack reliable transportation, they may stay at home.



They need school supplies Some students cannot afford a simple backpack to carry their books, let alone the basic school supplies they need daily.



They need to support their family The burden of caring for a sick parent or the need to hold down a part-time job to pay for groceries can lead to frequent absences.



They're homeless

Not knowing where they are going

to sleep at night may make going to school seem unimportant in comparison.



They can't see the blackboard

Students may give up on

their schoolwork rather than admit they cannot see what the teacher is writing on the blackboard.



They are in poor health

Chronic illness and mental illness

made worse by lack of medical care or proper medication keeps many kids out of the classroom.



They need a caring adult in their life

If a parent

dies or is absent from the home, kids lose the emotional support they need to succeed in school.



They don't have proper shoes or clothes

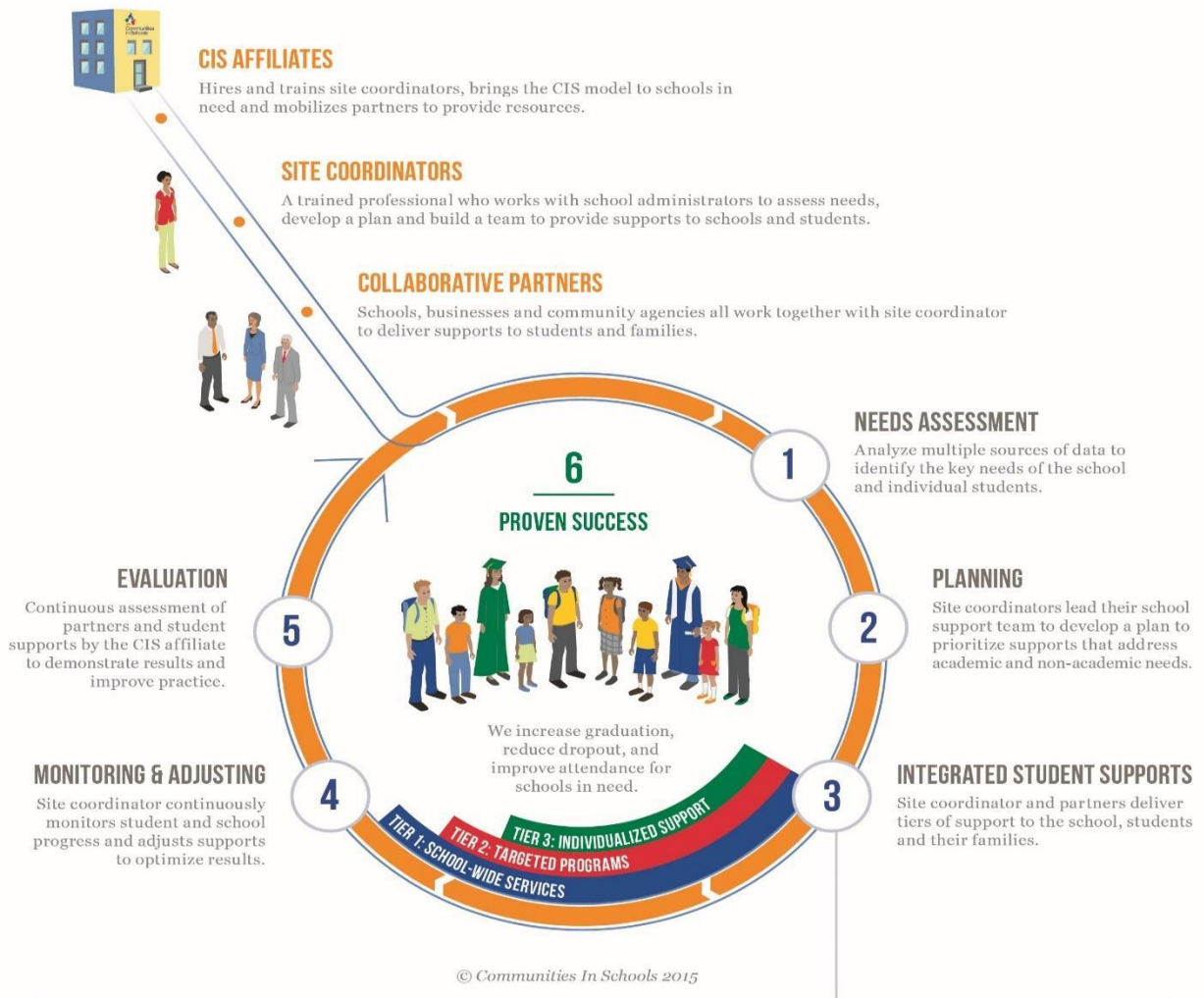
Clothes

that fit, shoes without holes, or warm winter jacket are luxuries for some students

THE SOLUTION

Whether it's food, school supplies, health care, counseling, academic assistance, or simply a positive role model, CIS is there to help. Our model is successful because of one simple tenet: Communities In Schools works with local communities to support local kids with local solutions.

OUR UNIQUE MODEL



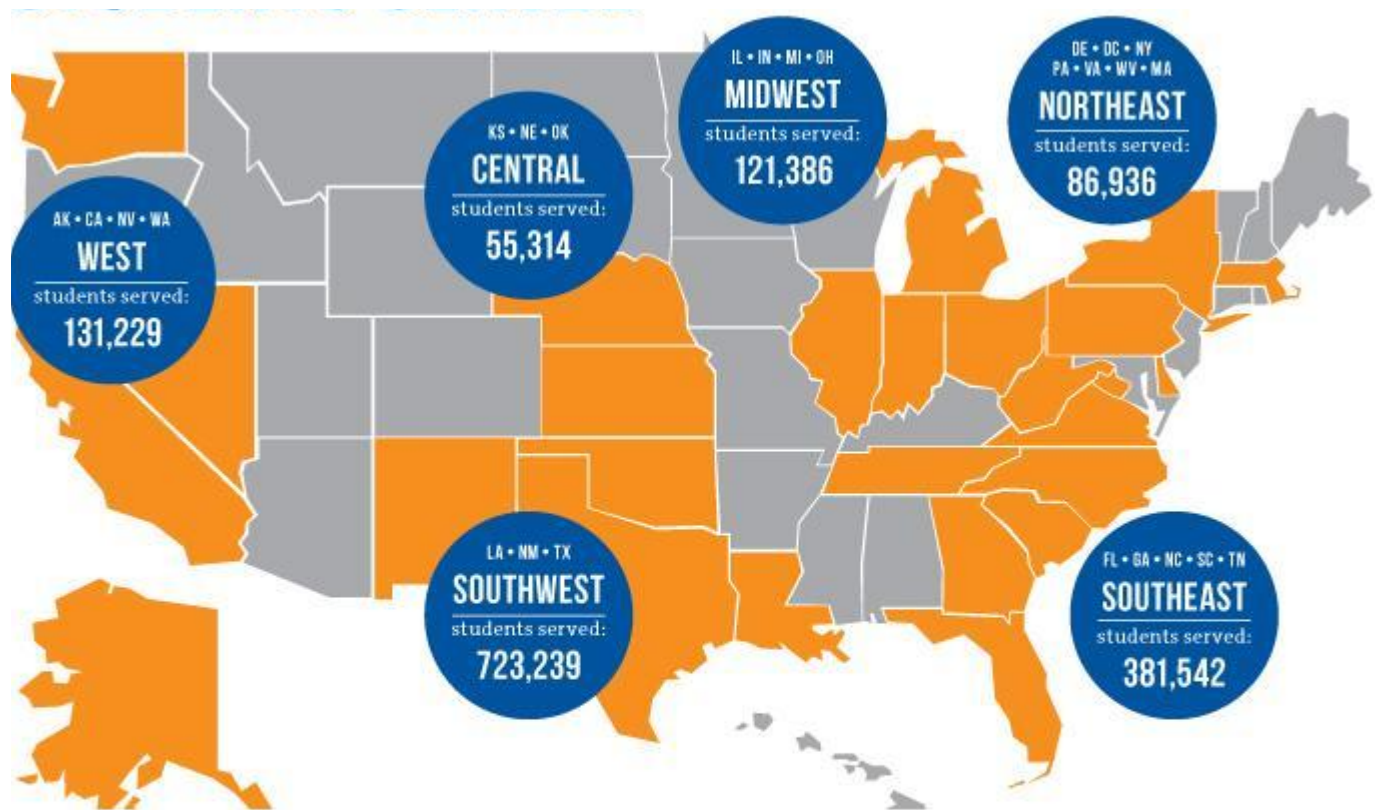
- ACADEMIC ASSISTANCE**
- BASIC NEEDS**
- BEHAVIORAL INTERVENTIONS**
- COLLEGE & CAREER PREP**
- COMMUNITY & SERVICE LEARNING**
- ENRICHMENT**
- FAMILY ENGAGEMENT**
- LIFE SKILLS**
- MENTAL HEALTH**
- PHYSICAL HEALTH**

THE COMMUNITY

The word “COMMUNITY” in our name is no accident. This work takes real partnerships, real collaboration, and real engagement. It’s these relationships that make a meaningful difference in children’s lives. **CIS is the hub, the glue that pulls all the pieces together, putting students at the center.**

For over 40 years, Communities In Schools has been helping students flourish and go on to bright futures. CIS affiliates position Site Coordinators inside schools and partner with local businesses, social service agencies, health care providers, and volunteers to provide students with exactly what they need.

COMMUNITIES IN SCHOOLS NATIONWIDE



Our Partners

Thank you to these organizations who donated funds for our programs or came to our campuses to educate and mentor our students!



Is your business or organization interested in partnering with our campuses? Email cis@cisgwfa.org for more information!

2021-2022 SCHOOL SUMMARY

#AllInForKids

With 2020-2021 covid year behind us, our CISGWFA Team was energized to go back to campuses and assist students in re-engaging back-to-school. Our Site Coordinators assisted by bringing in student services to help with Social Emotional Learning and Mental Health support among other services.



THANKFUL FOR OUR SITE COORDINATORS AND THEIR DEDICATION TO OUR STUDENTS!

SHAMAIA'S SUCCESS STORY



When Shamaia came to Communities In Schools Of Greater Wichita Falls Area (CISGWFA), she was struggling with self-confidence, but things changed after she met her CIS Site Coordinator. "Ms. Trotman helped me to become stronger and to believe in myself," said Shamaia.

Shamaia moved from Arkansas during her freshmen year to live with her father in Wichita Falls, Texas. During this time, Shamaia had trouble receiving necessary orthodontic care and had braces on 6 years with no regular dental maintenance.

Shamaia's braces caused her great pain and embarrassment. This was coupled with the stress and anxiety that comes with moving states and acclimating to a new environment, making Shamaia's life very difficult. Everything changed when she met her CIS Site Coordinator, Nanette Trotman.



"As a Site Coordinator, being able to have that one-on-one relationship with Shamaia really opened my eyes to see it's possible for any student to succeed in life. It only took one caring adult to help Shamaia stay on the right path and fully see her potential. I guided her into making the right decisions and to have smart realistic goals," said Trotman.




Trotman was also able to connect Shamaia with one of CISGWFA'S community partners to remove her braces and give her a fresh cleanse. "The growth I've seen over the years has gone beyond the shy and reluctant freshman to now a brave, confident, intelligent senior," said Ms. Trotman. Shamaia explained, "CIS is second home for me. When I first joined Communities In Schools, I was hurting because it was difficult for me to express myself. The more I got to know Ms. Trotman, the more comfortable I became sharing the problems I was going through...I'm forever grateful for her because she really cares about the kids in this school."

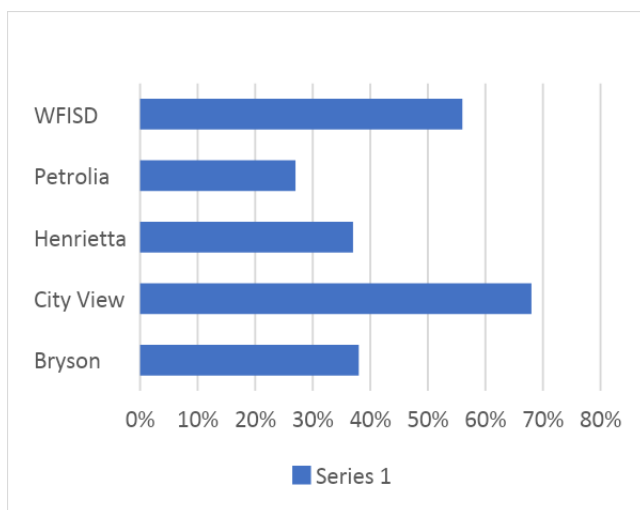
Shamaia has been determined to be successful and overcome any barriers in her life. She'll be graduating in May this year and attending Vernon Community College in the fall.

WHERE WE SERVE

2021-2022 SCHOOLS SERVED

 <p>WFISD BARWISE, KIRBY, HIRSCHI, RIDER, WFHS</p>	 <p>BRYSON INDEPENDENT SCHOOL DISTRICT PK- 12</p>
--	--

 <p>CITY VIEW ISD: ELEMENTARY</p>	 <p>HENRIETTA ISD: ELEMENTARY</p>	 <p>PETROLIA CISD: ELEMENTARY</p>
---	---	---



AT RISK POPULATIONS

BRYSON ISD.....	38%
CITY VIEW ISD.....	68%
HENRIETTA ISD.....	37%
PETROLIA CISD.....	27%
WFISD.....	56%

In 2021-2022 among cis case-managed students:

100% Stayed in school

100% graduated

94% improved in academics

WHO WE SERVE

In the 2021-2022 school year, 15,377 total service hours were provided to 6,835 PK-12th grade students by our Site Coordinators across 9 schools within 5 school districts. 878 of those students received intensive, ongoing services.

Of the 878 students receiving intensive services*

327 students were eligible for free/reduced lunch

290 students did not pass assessment instrument

29 students did not advance one grade level

79 students were experiencing family crisis/Homeless/Pregnant

94 students received services due to natural disaster/pandemic

44 students in custody of Department of Family and Protective Services

32 students have an incarcerated parent/guardian

*Some students may fall under multiple categories

GENDER

507 Female

371 Male

ETHNICITY/RACE

400 White Students

190 African American/Black

264 Hispanic/Latino

13 American Indian

9 Asian

2 Native Hawaiian

GRADE

309 Elementary Students

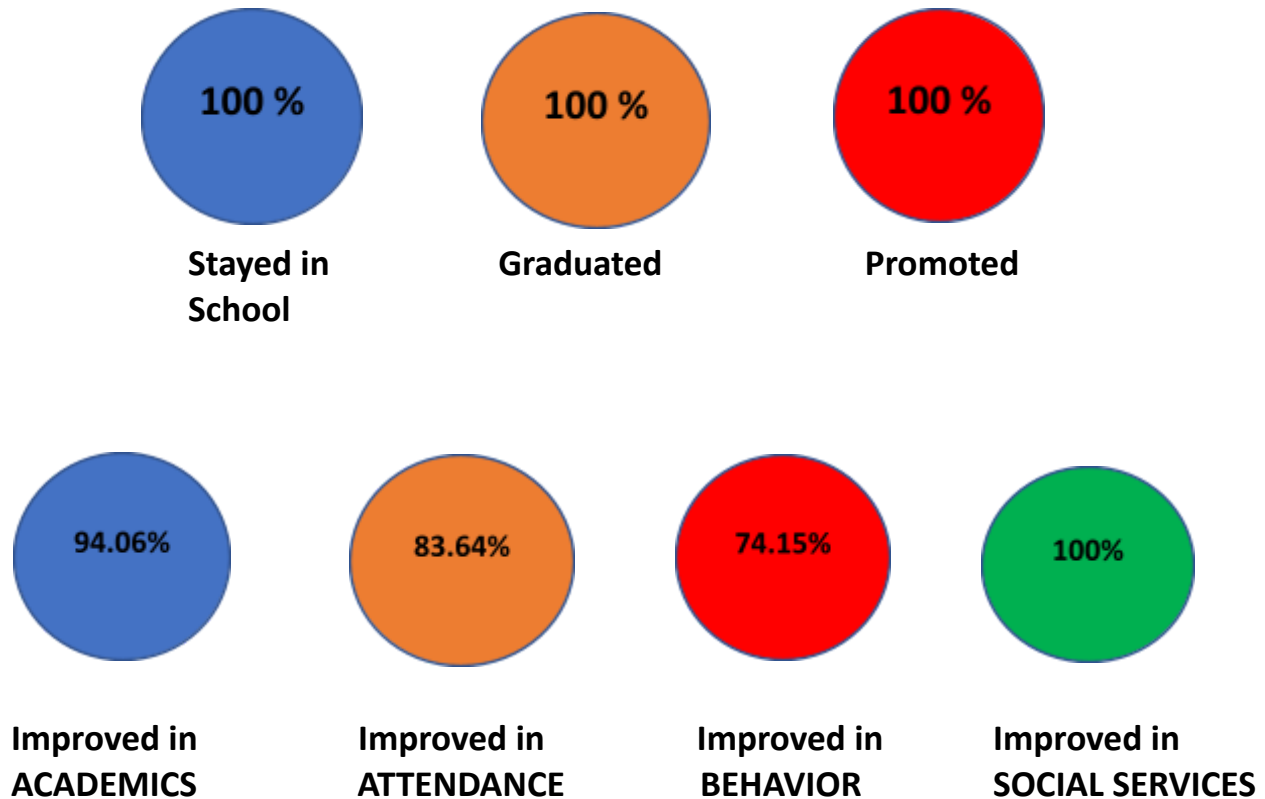
239 Middle School Students

330 High School Students

THE RESULTS OF OUR WORK

Living in poverty typically mean struggling to obtain the most basic necessities – food, shelter, and clothing. Communities In Schools helps to relieve those burdens so students can focus on the goals that will propel them forward. **And we did that for the more than 6,835 students across five districts this year with 878 receiving our intensive services.** Helping students identify and commit to goals is one key to our success. Site Coordinators and students work together to set goals for attendance, academics, and behavior.

Among the 878 students receiving intensive services **84% of students met attendance goals, 94% of students met academic goals and 74% of students met behavior goals for the school year. Most importantly, 100% of potential dropouts stayed in school, 100% of seniors graduated, and 100% of PK-11 students were promoted to the next grade.** When you look at the metrics behind the stories of our kids' success, the whole picture of education in America changes, looking brighter than ever.



COMMUNITIES IN SCHOOLS BEYOND HIGH SCHOOL

CISGWFA ALUMNI NETWORK

CISGWFA Alumni Network’s mission continues to be to surround students with a community of support, empowering students to achieve in life.

CISGWFA seeks to connect our Alumni with opportunities to give back, network, find support, and share their stories with current CIS students.



Alumni recognition for their on-going support of Communities In Schools. In picture: Maria Antonieta Garcia; Kristin Morris, Vice Chair; Yareli Gutierrez



2022 Induction Ceremony: In picture – Rey Saldaña, Jenna Beatty, Adriana Ortiz, Yareli Gutierrez, Maria Antonieta Garcia

OUR STEWARDSHIP

PROGRAM SUPPORTERS

Communities In Schools of Greater Wichita Falls Area gratefully acknowledges those whose support during FY 2021-2022 made our work possible. This list reflects donors to CISGWFA and may include support to more than one area, as well as in-kind support.

\$10,000

JSBRIDWELL FOUNDATION

\$1,000 +

AMERICAN NATIONAL BANK & TRUST

CLARKE EYE CARE CENTER

MIKAL LAMBERT

\$500

ANB/VERNAL HUFFINES

BRAINS ON FIRE

CHILD PROTECTIVE SERVICES

\$400 +

NTAUW 2018 SECC

\$300 +

JENNIFER DAVENPORT

\$200

JAMES MCCOY

TRINITY UNITED METHODIST CHURCH

\$80 +

BILAL SENGHOR

KELLI CYPERT

2021-2022 STAFF RECOGNITION

EMPLOYEE OF THE YEAR

Atzhiri has been a Site Coordinator with Communities In Schools for 4 years. This year she started a new position as a CIS caseworker. Atzhiri earned a degree in Social Work from Midwestern State University.

“As a caseworker, I am passionate and dedicated to serving the community that helped raise me. I look forward to supporting students and our Site Coordinators on all 9 campuses.”



Atzhiri Acosta
CIS Caseworker

SITE COORDINATOR OF THE YEAR

Chasity Hurd has been Site Coordinator with Communities In Schools for 2 years. In her 2 years at Rider High School, Chasity strived to advocate for the students and provided services that impacted the CIS students in a meaningful way.

“Ms. Hurd always takes the time to listen no matter the mood she is in.”

Kendall Marsh -former student



Chasity Hurd
Site Coordinator

2021-2022 SITE COORDINATORS

Kassie Morris
WFISD/Barwise Middle School

Krystal Webb
Bryson ISD

Jesslyn Beck
City View ISD Elementary School

Caren Rangel
Henrietta ISD Elementary School

Nanette Trotman
WFISD/Hirschi High School

Robert Comello
WFISD/Kirby Middle School

Mara Scottie
Petrolia CISD Elementary School

Chasity Hurd
WFISD/Rider High School

Martha Cataño
WFISD/Wichita Falls High School



LOOKING AHEAD – 2022-2023 GOALS

COMMUNITIES IN SCHOOLS OF GREATER WICHITA FALLS AREA WILL

SERVE MORE STUDENTS

Continuing to serve our districts and include more students and their families that can benefit from our services.

MEET STUDENT GOALS

Academic, behavioral, and attendance goals set by our students is vital to their success.

CONTINUE PROMOTION + GRADUATION

Our goal is focused on promotion to the next grade and seniors graduating.

ESTABLISH ALUMNI NETWORK

The network will help GISGWFA Alumni in life after graduation, while empowering to give back to our community through public speaking, workshops, and networking events.

CONTACT US

COMMUNITIES IN SCHOOLS GREATER WICHITA FALLS AREA

705 8TH STREET, STE. 700, WICHITA FALLS, TX 76301

940.264.6743, CIS@CISGWF.ORG

www.cis-wichitafallsarea.com



AREA IMPACT REPORT



SINCE 2007, COMMUNITIES IN SCHOOLS OF GREATER WICHITA FALLS AREA HAS BEEN COMMITTED TO HELPING WICHITA FALLS AREA YOUNG PEOPLE REACH THEIR POTENTIAL. WE WORK DIRECTLY WITH SCHOOLS TO HELP IDENTIFY BARRIERS, AND THEN GIVE STUDENTS THE TOOLS AND RESOURCES THEY NEED TO OVERCOME THEM. IT TAKES A COMMUNITY OF SUPPORT, AND WE THANK YOU FOR MAKING OUR CRITICAL PROGRAMMING POSSIBLE.